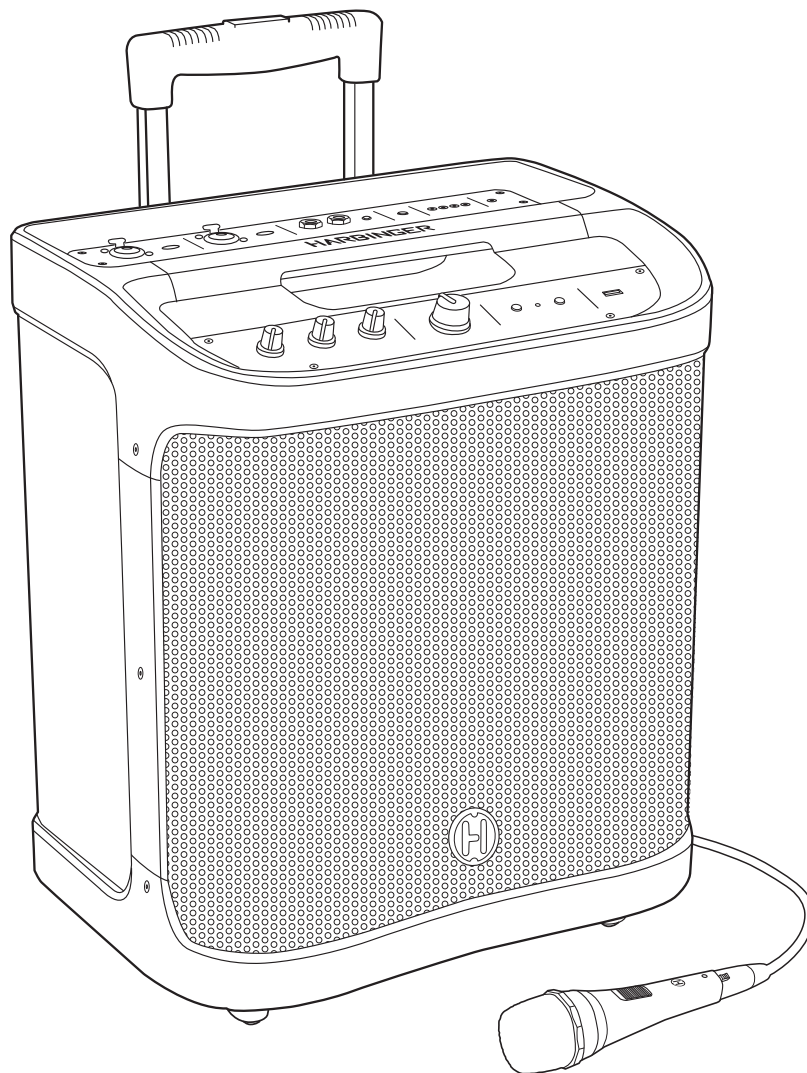




**HARBINGER**

**RT100**  
**OWNER'S MANUAL**

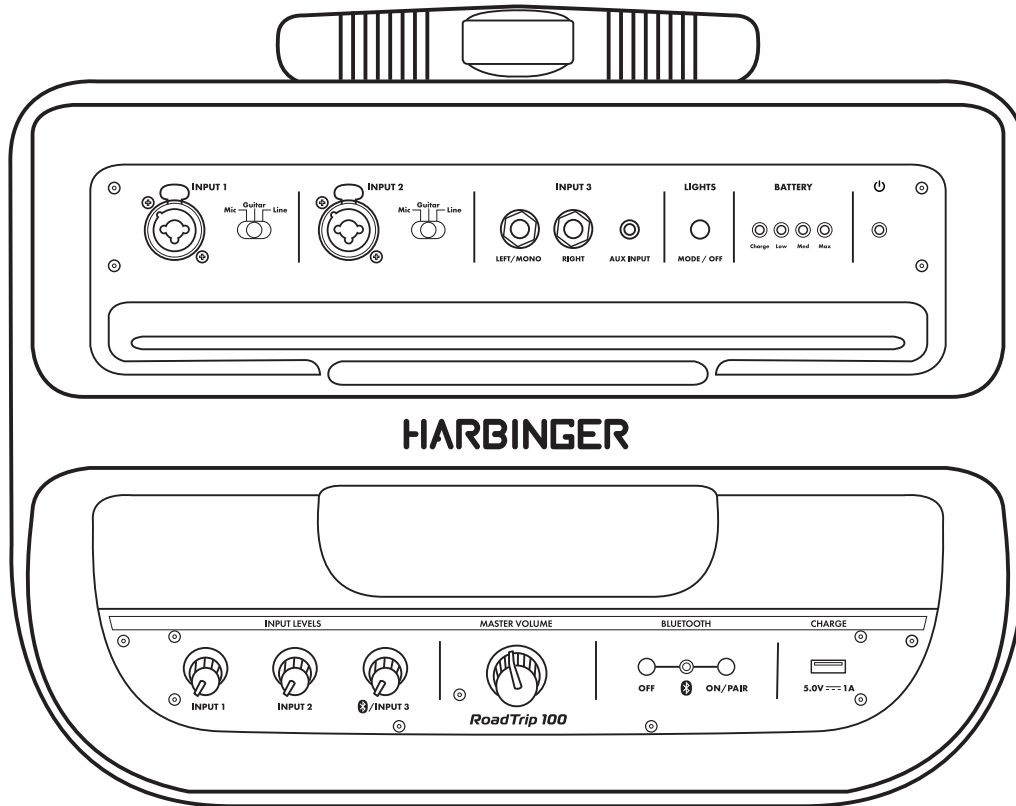


***RoadTrip***  
S E R I E S



HARBINGER

## QUICK START GUIDE



### POWER SOURCE

- Connect power cord to power source, and to rear panel jack.
- Internal battery will be charged when power source is connected, and power switch is switched on.
  - BATTERY LEDs indicate battery charging status
    - Charge - battery is being charged
    - Low - battery is about 25% or less charged
    - Med - battery is about 70% charged
    - Max - battery is fully charged

### BATTERY OPERATION

- After battery is charged, RT100 can operate without power adapter.
- RT100 can typically operate for about 5 hours or more from battery.

### SETTING UP/HELPFUL TIPS

- Position RT100 in the desired location, and ensure it is stable.
- Make sure the Power Switch is off.
- Turn all knobs to minimum.

### MAKING THE CONNECTIONS

- Connect sources to Channel 1, 2 and 3 input jacks as desired. (All these input jacks can be used at once, along with Bluetooth audio input.)
- If using microphone, connect microphone cable between microphone, and Channel 1 or Channel 2 input.

### CHECK SWITCHES

- Check that Channel 1 and Channel 2 switches match sources:
  - Mic - for microphones, or line level sources with low output level
  - Guitar - for acoustic guitar or guitar pedal board output
  - Line - for mixers, keyboards and other electronics

### POWER UP

- Power on any devices connected to input jacks, then turn on the rear panel power switch of the RT100 after all source devices are on.
- Power LED on RT100 will be lit to indicate when unit is powered on. To conserve battery power, turn off RT100 when it is not in use, and not connected to a power source.

### SOURCES AND VOLUME

- If any microphone you are using has a switch, like included microphone does, turn it on.
- If any source has an output volume control, turn it up.
- Turn Channel 1, 2 and 3 knobs and Master Volume to desired levels.

### BLUETOOTH AUDIO INPUT

- Press Bluetooth button to start Bluetooth pairing.
- From your Bluetooth audio source device, look for RT100 and select it.
- Channel 3 knob also controls the level for audio from Bluetooth and USB jack.
- Once a Bluetooth source has paired with RT100, pressing the Bluetooth button on RT100 will force it to disconnect, so a different device can be paired.
- OFF button disables Bluetooth.

### USB JACK

- You can connect your USB charging cable from this jack to your mobile device, for charging.
- RT100 must be powered on to charge a device connected to this jack.

### LIGHTS

- Press button to activate lights, select from available light modes, and deactivate lights.



## BLUETOOTH® TROUBLESHOOTING

These steps should resolve any Bluetooth trouble you may encounter with an Apple iOS or Android device:

- Power off the RT100 and leave it off
- Follow the steps below for your smartphone

On your Apple iOS device

1. Open Settings app, select Bluetooth
2. If RT100 is listed under MY DEVICES, touch info button, tap to Forget This Device
3. Turn off Bluetooth, wait 10 seconds, turn on Bluetooth

On your Android device

1. Open Settings, select Bluetooth
2. If RT100 is listed under Paired Devices, touch gear Icon, and tap to Unpair
3. Turn off Bluetooth, wait 10 seconds, turn on Bluetooth

- Then power on RT100, and press Bluetooth button, so LED flashes
- You should now be able to connect to RT100 via Bluetooth

## BATTERY CARE AND REPLACEMENT

The Roadtrip 100 uses a rechargeable, sealed lead-acid type battery, the same type that is used in automobiles, and many battery backup systems for computer equipment. These batteries are highly reliable and safe, and are approved for air transport as well.

Like a car battery, the battery in your RoadTrip can last for years, if used properly. Here are some tips to get the longest battery life.

- You can leave your RoadTrip plugged in at all times, it is not necessary to disconnect it from a power source when not in use.
- Do not store at temperatures above 90°F or below 32°F. Do not charge (disconnect from power source) at temperatures above 49°C (120°F).
- If you will not be using your RoadTrip for a long period, it is best to charge it fully before storage, and you will preserve battery life if you re-charge every 6 months.
- Like a car battery, when not in use, the battery will slowly lose charge, so you will want to plan to charge the battery before use, if the unit has been stored for some time.
- If the battery charge is very low, it can take longer to recharge, you may want to allow the battery to charge for 24 hours to ensure you are getting the maximum charge in this case.

THE BATTERY IN YOUR HARBINGER RT100 MAY BE REPLACED WITH EITHER AN AUTHENTIC REPLACEMENT BATTERY OR AN EQUIVALENT BATTERY, PROVIDED THAT SUCH EQUIVALENT BATTERY STRICTLY ADHERES TO THE BATTERY SPECIFICATION REQUIREMENTS LISTED HEREIN. PLEASE REFER TO THE HARBINGER WEBSITE OR OUR SUPPORT TEAM TO OBTAIN AN AUTHENTIC REPLACEMENT BATTERY. (SEE BACK PAGE)

REPLACING THE BATTERY WITH ANY NON-AUTHENTIC OR NON-CONFORMING BATTERY MAY COMPROMISE DEVICE PERFORMANCE, VOID WARRANTY, AND CAN BE HAZARDOUS.

WHEN DISPOSING OF YOUR ROADTRIP BATTERY, PLEASE COMPLY WITH ALL LOCAL DISPOSAL AND RECYCLING REGULATIONS.

CAUTION: TO AVOID RISK OF FIRE, ELECTRIC SHOCK, OR DAMAGE TO YOUR ROADTRIP RT100 PRODUCT, USE ONLY AN AUTHENTIC HARBINGER REPLACEMENT BATTERY OR EQUIVALENT BATTERY THAT STRICTLY CONFORMS WITH THE BATTERY SPECIFICATION REQUIREMENTS LISTED IN THIS OWNER'S MANUAL.

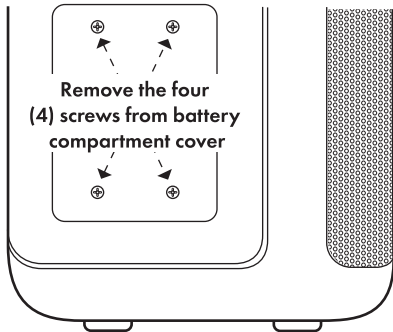
CAUTION: BEFORE ATTEMPTING TO REPLACE THE HARBINGER RT100 BATTERY, READ AND OBSERVE ALL SAFETY INFORMATION PROVIDED IN THIS OWNER'S MANUAL (SEE PAGES 6-7).

# BATTERY REPLACEMENT

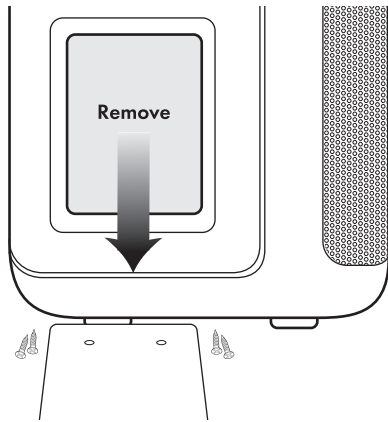
SEE BATTERY SPECIFICATION REQUIREMENTS CHART ON PAGE 5 BEFORE REPLACING BATTERY.

① Begin by positioning the power switch into the "OFF" position and disconnecting the Power Supply from the RT100 power input.

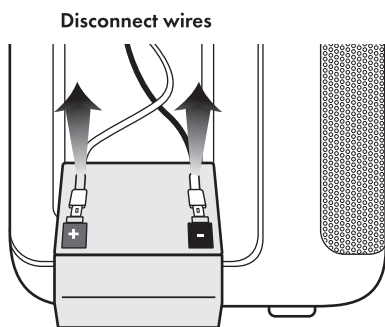
② Remove the (4) screws from battery compartment cover, located on the left side of the speaker.



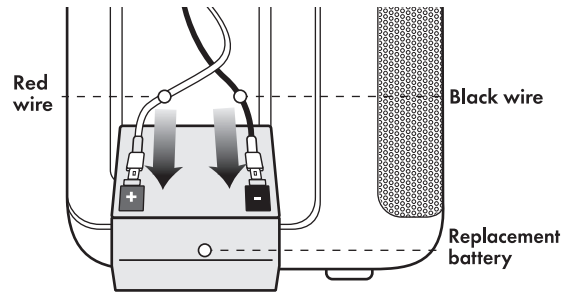
③ Remove battery from compartment.



④ Disconnect wires from battery terminals. Pull from terminal connector; pulling from wire may damage the electrical connection.

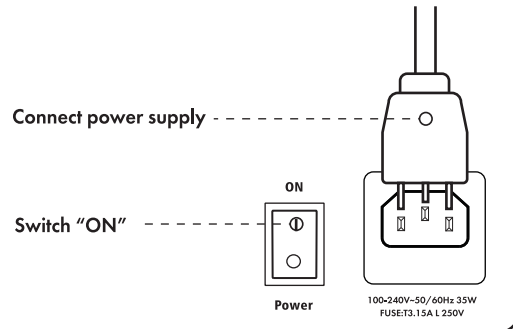


⑤ On replacement battery, remove any protective plastic caps from terminals. Connect red wire(+) to red terminal(+), and black wire(-) to black terminal (-).

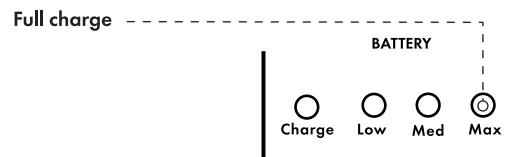


⑥ Place new battery into compartment. Re-position battery cover and re-insert battery cover screws.

⑦ To complete battery replacement, connect power supply to power input jack. Turn "ON" device power and fully charge the replacement battery.



⑧ Battery is fully charged when indicator light turns green.





## RT100 SPECIFICATIONS

RT100 Specifications		
Amplifier	Input 1	XLR and 1/4-inch TRS balanced/unbalanced compatible audio input with Mic/Guitar/Line Switch and Input Gain Control
	Input 2	XLR and 1/4-inch TRS balanced/unbalanced compatible audio input with Mic/Guitar/Line Switch and Input Gain Control
	Input 3	Stereo Line: Left/mono and right 1/4-inch TS unbalanced audio line inputs Aux: 1/8-inch mini TRS unbalanced input (-10dB) Bluetooth Audio: with Off and On/Pair buttons plus LED
	Charge Jack	USB Standard 5.0V, 1 Amp supply
	Lighting	RGB light ring, sound active, selectable modes, defeatable
	Power Output	100 Watts Peak, 50 Watts RMS
	Volume	Volume control per channel
	Power Input	110-120V/60 Hz
	Battery	12V 5.0AH Maintenance-free Sealed Lead-acid Battery 4.87"H (plus tabs) x 3.4375"W x 2.625"D Max Discharge Current: 75A Terminal: T1/T2 Contact Customer Support for replacement
Battery	Type	Sealed Lead Acid
	Rated Voltage	12V
	Nominal Capacity (recommended)	5.0Ah
	Dimensions and Weights (not to exceed)	Length: 90mm (+/-1mm)
		Width: 70mm (+/-1mm)
		Height: 101mm (+/-2mm)
Max Discharge Current	75A	
Terminal	T1/T2	
Speaker	Type	8" 2-way vented design
	Frequency Response	65-15K Hz
	Max SPL@1M	110dB
	HF Driver	1" Driver
	LF Driver	8" Driver
	Cabinet	Wood composite, polypropylene trimmed, wheeled
	Handles	Top carry handle, telescoping handle for rolling transport
	Suspension Points	RT100 is Not Designed For Suspension
	Pole Mount	35mm stand pole compatible
	Product Dimensions	18.25"H x 14.7"W x 11.7"D
Dimensions and Weights	Packaging Size	22.5"H x 17.2"W x 14"D
	Net Weight	26 pounds
	Gross Weight	32 pounds

## IMPORTANT SAFETY INSTRUCTIONS

Please keep this instruction manual for future reference and for the duration of owning the RT100 powered loudspeaker. Please carefully read and understand the instructions inside this owner's manual before attempting to operate your new powered loudspeaker.

This instruction manual includes essential safety information regarding the use and maintenance of the amplifier. Take special care to heed all warning symbols and signs inside this manual and those printed on the amplifier on the back of the loudspeaker.

### WARNING

**TO PREVENT FIRE OR SHOCK HAZARD, DO NOT EXPOSE THE AMPLIFIER TO WATER/MOISTURE, NOR SHOULD YOU OPERATE THE AMPLIFIER NEAR ANY WATER SOURCE.**

The exclamation point triangular symbol is intended to alert the user to the presence of important operating and maintenance(servicing) instructions in the user manual accompanying the Amplifier.

The lightning flash with an arrow triangular symbol is intended to alert the user to the presence of non-insulated "dangerous voltage" within the product's enclosure, and may be of sufficient magnitude to constitute a risk of electric shock.

### WARNING

Handle the power supply cord with care.

Do not damage or deform it as it may cause electric shock or malfunction when used. Hold the plug attachment when removing from wall outlet. Do not pull on the power cord.

### IMPORTANT SAFETY PRECAUTIONS

1. Read these instructions.
2. Keep these instructions.
3. Heed all warnings.
4. Follow all Instructions.
5. Do not use this apparatus near water.
6. Clean only with dry cloth.
7. Do not block any ventilation openings. Install in accordance with the manufacturer's instructions. DO NOT turn on the amplifier module before connecting all other external devices.
8. Do not install near any heat sources such as radiators, heat registers, stoves, or other apparatus (including amplifiers) that produce heat.
9. Do not defeat the safety purpose of the polarized or grounding-type plug. A polarized plug has two blades with one wider than the other. A grounding type plug has two blades and a third grounding prong. The wide blade or the third prong is provided for your safety. If the provided plug does not fit into your outlet, consult an electrician for replacement of the obsolete outlet.
10. Protect the power cord from being walked on or pinched particularly at plugs, convenience receptacles, and the point where they exit from the apparatus.
11. Only use attachment/accessories specified by the manufacturer.
12. Use only the cart, stand, tripod, bracket or table specified by the manufacturer, or sold with the apparatus. When a cart is used, use caution when moving the cart/apparatus combination to avoid injury from tip-over.
13. Unplug this apparatus during lightning storms or when unused for long periods of time.





14. Refer all servicing to qualified service personnel. Servicing is required when the apparatus has been damaged in any way, such as power-supply cord or plug is damaged, liquid has been spilled or objects have fallen into the apparatus, the apparatus has been exposed to rain or moisture, does not operate normally, or has been dropped.
15. **POWER SOURCES** – This product should be operated only from the type of power source indicated on the rating label. If you are not sure of the type of power supply to your home, consult your product dealer or local power company.
16. **WALL OR CEILING MOUNTING** – The product should never be mounted to a wall or ceiling.
17. Where the mains plug or an appliance coupler is used as the disconnect device, the disconnect device shall remain readily operable.
18. **OBJECT AND LIQUID ENTRY** – Care should be taken so that objects do not fall and liquids are not spilled into the enclosure through openings.
19. **Water and Moisture:** This product should be kept away from direct contact with liquids. The apparatus shall not be exposed to dripping or splashing and that no objects filled with liquids, such as vases, shall be placed on the apparatus.
20. Keep the speaker system out of extended or intense direct sun light.
21. No containers filled with any type of liquid should be placed on or near the speaker system.
22. **SERVICING** – The user should not attempt any service to the speaker and/or amplifier beyond that described in the operating instructions. All other servicing should be referred to qualified service personnel.
23. **VENTILATION** – Slots and openings in the amplifier are provided for ventilation and to ensure reliable operation of the product and to protect it from overheating. These openings must not be blocked or covered. The openings should never be blocked by placing the product on a bed, sofa, rug, or other similar surface. This product should not be placed in a built-in installation such as a bookcase or rack.
24. **Protective earthing terminal:** The apparatus should be connected to a main socket outlet with a protective earthing connection.
25. **ACCESSORIES** – Do not place this product on an unstable cart, stand, tripod, bracket, or table. The product may fall, causing serious injury to a child or adult, and serious damage to the product. Use only with a cart, stand, tripod, bracket, or table recommended by the manufacturer, or sold with the product.
26. When moving or not using the appliance, secure the power cord (e.g., wrap it with a cable tie). Be careful not to damage the power cord. Before using it again, make sure the power cord has not been damaged. If the power cord has been damaged at all, bring the unit and cord to a qualified service technician for repair or replacement as specified by the manufacturer.
27. **LIGHTNING** – For added protection during a lightning storm, or when it is left unattended and unused for long periods of time, unplug it from the wall outlet. This will prevent damage to the product due to lightning and power-line surges.
28. **REPLACEMENT PARTS** – When replacement parts are required, be sure the service technician has used replacement parts specified by the manufacturer or have the same characteristics as the original part. Unauthorized substitutions may result in fire, electric shock, or other hazards.



## IMPORTANT SAFETY INSTRUCTIONS

To prevent electric shock, do not use a polarized plug with an extension cord, receptacle or other outlet unless the blades can be fully inserted to prevent blade exposure.

	<b>CAUTION</b> RISK OF ELECTRIC SHOCK DO NOT OPEN	<b>AVIS</b> RISQUE DE CHOC ELECTRIQUE NE PAS OUVRIR	
<p><b>CAUTION:</b> To reduce the risk of electric shock, do not remove chassis. No user-serviceable parts inside. Refer servicing to qualified service personnel.</p> <p><b>AVERTISSEMENT:</b> Pour réduire les risques d'incendie et d'électrocution, ne pas exposer ce matériel à la pluie ou à l'humidité.</p>			



THIS SYMBOL IS INTENDED TO ALERT THE USER TO THE PRESENCE OF IMPORTANT OPERATING AND MAINTENANCE (SERVICING) INSTRUCTIONS IN THE LITERATURE ACCOMPANYING THE UNIT.



APPARATUS SHALL NOT BE EXPOSED TO DRIPPING OR SPLASHING AND THAT NO OBJECTS FILLED WITH LIQUIDS, SUCH AS VASES, SHALL BE PLACED ON THE APPARATUS.

### HEARING DAMAGE AND PROLONGED EXPOSURE TO EXCESSIVE SPLs

Harbinger RT100 powered loudspeakers are capable of producing extremely loud volume levels that can cause permanent hearing damage to performers, production crews or the audience. Hearing protection is recommended during long-term exposure to high SPLs (sound pressure levels).

Remember, if it hurts, it is definitely too loud! Long term exposure to high SPLs first causes temporary threshold shifts; limiting your ability to hear the actual loudness and exercise good judgment. Repeated long term exposure to high SPLs will cause permanent hearing loss.

Please note the recommended exposure limits in the accompanying table. More information about these limits is available on the US government Occupational Safety and Health (OSHA) website at: [www.osha.gov](http://www.osha.gov).

### Permissible Noise Exposures (1)

Duration per day, hours	Sound level dBA slow response
8	90
6	92
4	95
3	97
2	100
1.5	102
1	105
0.5	110
0.25 or less	115

## FCC STATEMENTS

1. Caution: Changes or modifications to this unit not expressly approved by the party responsible for compliance could void the user's authority to operate the equipment.
2. This device complies with Part 15 of the FCC Rules. Operation is subject to the following two conditions: (1) This device may not cause harmful interference, and (2) this device must accept any interference received, including interference that may cause undesired operation.
3. Note: This equipment has been tested and found to comply with the limits for a Class B digital device, pursuant to Part 15 of the FCC Rules. These limits are designed to provide reasonable protection against harmful interference in a residential installation. This equipment generates, uses, and can radiate radio frequency energy and, if not installed and used in

accordance with the instructions, may cause harmful interference to radio communications. However, there is no guarantee that interference will not occur in a particular installation. If this equipment does cause harmful interference to radio or television reception, which can be determined by turning the equipment off and on, the user is encouraged to try to correct the interference by one or more of the following measures:

- Reorient or relocate the receiving antenna
- Increase the separation between the equipment and receiver
- Connect the equipment into an outlet on a circuit different from that to which the receiver is connected
- Consult the dealer or an experienced radio/TV technician for help



## WARRANTY/CUSTOMER SUPPORT

### 1 YEAR HARBINGER LIMITED WARRANTY

Harbinger provides, to the original purchaser, a one (1) year limited warranty on materials and workmanship on all Harbinger cabinets, loudspeaker and amplifier components from the date of purchase.

For warranty support, please visit our website at [www.HarbingerProAudio.com](http://www.HarbingerProAudio.com), or contact our Support Team at 888-286-1809 for assistance. Harbinger will repair or replace the unit at Harbinger's discretion.

This warranty does not cover service or parts to repair damage caused by neglect, abuse, normal wear and tear and cosmetic appearance to the cabinetry not directly attributed to defects in materials or workmanship. Also excluded from coverage are damages caused directly or indirectly due to any service, repair(s), or modifications of the cabinet, which has not been authorized or approved by Harbinger. This one (1) year warranty does not cover service or parts to repair damage caused by accident, disaster, misuse, abuse, burnt voice-coils, over-powering, negligence, inadequate packing or inadequate shipping procedures.

The sole and exclusive remedy of the foregoing limited warranty shall be limited to the repair or replacement of any defective or non-conforming component. All warranties including, but not limited to, the express warranty and the implied warranties of merchantability and fitness for a particular purpose are limited to the one (1) year warranty period. Some states do not allow limitation on how long an implied warranty lasts, so the above limitation may not apply to you. There are no express warranties beyond those stated here. In the event that applicable law does not allow the limitation of the duration of the implied warranties to the warranty period, then the duration of the implied warranties shall be limited to as long as is provided by applicable law. No warranties apply after that period.

Retailer and manufacturer shall not be liable for damages based upon inconvenience, loss of use of product, loss of time, interrupted operation or commercial loss or any other incidental or consequential damages including but not limited to lost profits, downtime, goodwill, damage to or replacement of equipment and property, and any costs of recovering, reprogramming, or reproducing any program or data stored in equipment that is used with Harbinger products. This guarantee gives you specific legal rights; you may have other legal rights, which vary from state to state.

Harbinger  
P.O. Box 5111, Thousand Oaks, CA 91359-5111

All trademarks and registered trademarks mentioned herein are recognized as the property of their respective holders.

**MISSING  
—OR—  
DAMAGED  
PARTS?**

**HAVE QUESTIONS?**

**CALL  
888-286-1809  
TOLL FREE**

**—HAVE—  
ASSEMBLY  
QUESTIONS?**

OR VISIT OUR WEBSITE AT: [HARBINGERPROAUDIO.COM](http://HARBINGERPROAUDIO.COM)